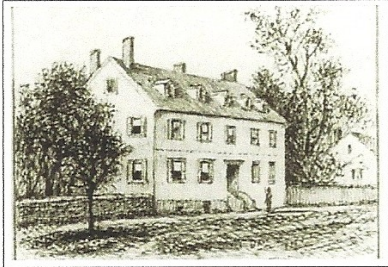


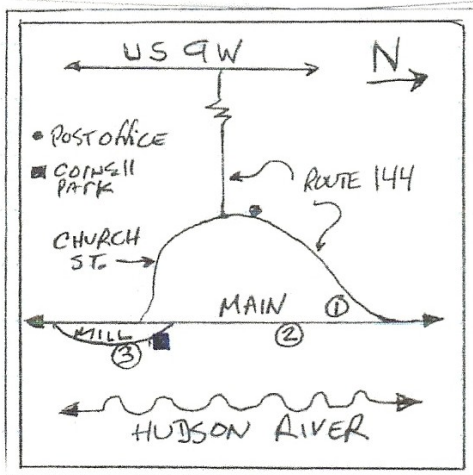
New Baltimore Conservancy presents
A TASTE OF HISTORY
SATURDAY, MAY 15 6-9PM
 To benefit the scholarship fund



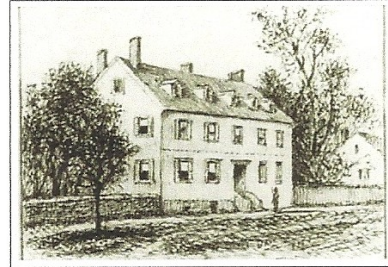
Here's how the Traveling House Party works:
 Appetizers and beverages will be served at the home of (1) Peter and Carol Melewski, Prospect Place, 936 Rt. 144 from 6 - 7pm. Then walk or drive down to (2) John Cannon and Alta Turner's 380 Main St., Old Grey Church home, from 7 - 8pm for more appetizers and beverages. Wind down to the home of (3) KC and Eilleen Vosburgh, 42 Mill St. for beverages and desserts from 8 - 9pmish. Tickets can be purchased by mailing \$12.50/person to New Baltimore Conservancy, P.O. Box 322, NB or at any of the homes from one of our 'ticketmasters'.

Parking is limited in the hamlet. Suggestions;
 Post Office, Main St, Cornell Park or Mill St
 across from the Vosburgh's or in their driveway.

For more info contact Eilleen Vosburgh at 756-8113
 or Carol Melewski at 573-8921



New Baltimore Conservancy presents
A TASTE OF HISTORY
SATURDAY, MAY 15 6-9PM
 To benefit the scholarship fund



Here's how the Traveling House Party works:
 Appetizers and beverages will be served at the home of (1) Peter and Carol Melewski, Prospect Place, 936 Rt. 144 from 6 - 7pm. Then walk or drive down to (2) John Cannon and Alta Turner's 380 Main St., Old Grey Church home, from 7 - 8pm for more appetizers and beverages. Wind down to the home of (3) KC and Eilleen Vosburgh, 42 Mill St. for beverages and desserts from 8 - 9pmish. Tickets can be purchased by mailing \$12.50/person to New Baltimore Conservancy, P.O. Box 322, NB or at any of the homes from one of our 'ticketmasters'.

Parking is limited in the hamlet. Suggestions;
 Post Office, Main St, Cornell Park or Mill St
 across from the Vosburgh's or in their driveway.

For more info contact Eilleen Vosburgh at 756-8113
 or Carol Melewski at 573-8921

